



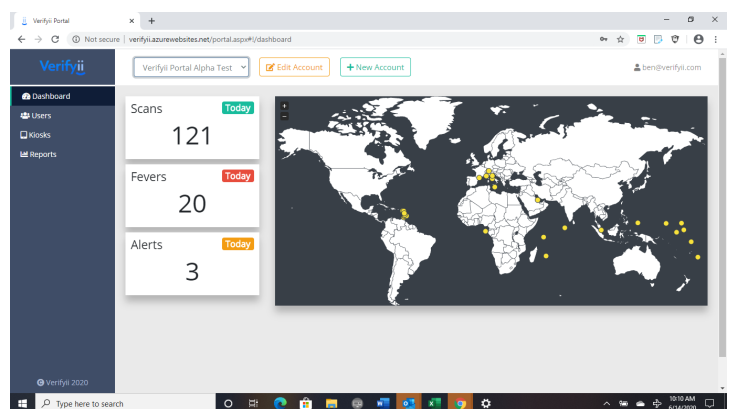
Verifyii Intelligent Identification - Helping Law Enforcement and Detention Centers Open Up America Again

Verifyii Intelligent Identification's elevated body temperature (EBT) screening technology platform provides law enforcement and detention centers with a solution that exceeds government recommendations for getting back to business. The White House has published guidelines for [Opening Up America Again](#) that Employers implement temperature checks for all phases of reopening. The CDC has provided additional guidance in its [Interim Guidance on Management of Coronavirus in Correctional and Detention Facilities](#) that includes "perform intake screening and temperature checks for all new entrants.." Verifyii's EBT screening platform can be utilized both for staff and intakes, allowing human assets to resume regular duties rather than screening others.

Verifyii not only provides law enforcement and detention centers with a solution that meets screening guidelines, our EBT screening platform meets [FDA guidelines](#) for telethermographic systems by individually screening and implementing black body reference for high accuracy (ISO Standard TR 13154). The Verifyii EBT screening platform is both touchless and automated, meaning [safe social distancing screening guidelines](#) are exceeded, and valuable human assets can resume their primary roles in public safety, rather than screening coworkers and intakes.

By developing a technology platform around EBT screening, Verifyii provides law enforcement and detention centers with real time data, alerts and notifications that help leaders not only screen safely and effectively - but also exceed [CDC guidance](#) to "regularly communicate and monitor developments with local authorities and employees." Verifyii's data analytics provide law enforcement and detention centers with regular reporting that can simplify internal and external communications - helping first responders, detention centers and communities safely and confidently continue operations. In addition to reporting, Verifyii's EBT screening platform can easily integrate with third party payroll, time card, HRMS and/or access control systems, seamlessly complementing existing business systems and improving efficiencies.

What happens if this all goes away? Rather than providing a simple red-light/green-light screen that may become useless - Verifyii's technology platform includes vendor and visitor management capabilities, ensuring that your workplace remains safer and healthier even after the pandemic. Verifyii's EBT screening platform can also provide vendor/visitor credentialing and check-in services, including mNDA execution, background check integration, safety video/instruction, corporate policy acknowledgement, health/travel questionnaire, etc. By integrating with time card and payroll systems, Verifyii's EBT screening platform can also replace existing time card systems, most of which require touch. Regardless of COVID - fevers, flus and contagious infections can greatly disrupt a precinct or detention center and Verifyii provides solutions that ensures safe operations in both the current reality of COVID and whatever the future might bring. Choose the best practices that hospitals and businesses are implementing across the county to safely reopen, choose Verifyii.



*the Verifyii Intelligent Identification System is not intended for, nor designed to diagnose or detect medical conditions

About the System:

Verifyii EBT System Overview: <https://youtu.be/5af38TqbgQs>



Advanced Elevated Body Temperature Screening:

highest quality, most accurate IR camera system on the market, combined with Verifyii's proprietary user interface and analytics – creating an easy to use and highly accurate screening system.

Touch-less and Automated:

Verifyii's non-contact system detects individuals as they approach the controlled area and the EBT screening is completed within 5 seconds. In accordance with Internal Organization Standardization (ISO) guidelines Verifyii controls subjects distance, only allows for one person at a time, and requires a "pause" for accurate reading (ISO/TR 13154).

Facial Recognition & HRMS Integration:

Verifyii's robust hardware and cloud database allows for seamless integration with current human resource systems. The system can be utilized for employee clock-in/clock-out, payroll, and/or visitor access. It allows for real time visibility and protection. Additional integration features include RFID badge scanning and facial recognition for touchless, automated integration – all while protecting employee personally identifiable information (PII).

Cloud Based Cellular Connectivity:

No support is needed from your IT department and no "rogue" devices are sitting on your network. The system connects via cellular to Verifyii's data management cloud, which provides customers with 24/7/365 system monitoring, all software updates and enhancements, and data analytics including alerts, notifications and trend analysis – allowing leaders to make better, more accurate and real-time decisions regarding employee health and safety.

Security and Anonymity:

Verifyii's EBT screening kiosk connects to our data management cloud over a virtual private network (VPN) established by the cellular service provider specifically for Verifyii. This means that our kiosks are not identifiable on any network, preventing any attempted hacks. Verifyii also implements SSL mutual certificate authentication. Additionally, no personally identifiable information (PII) is captured or retained by Verifyii.

Contact Tracing:

Through Verifyii's time card system, contract tracing functionality is available while employees or visitors are on site. Employees and visitors are screened on arrival and departure, so if a fever is developed while onsite, leadership can be notified and appropriate quarantine measures can be taken.

Made in the USA:

Designed and manufactured in South Carolina.

